

\$189,500 - 210 Locust St #16ew, PHILADELPHIA

MLS® #PAPH2553628

\$189,500

Bedroom, 1.00 Bathroom, 522 sqft
Residential

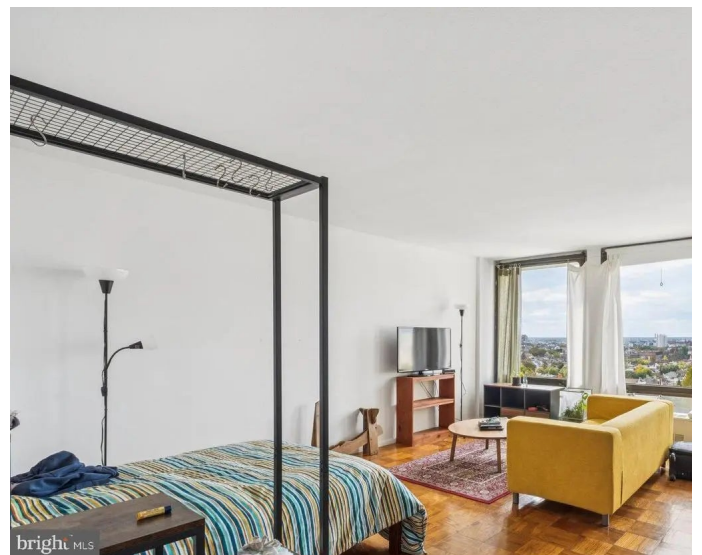
WASHINGTON SQ, PHILADELPHIA, PA

Sun-soaked studio with sweeping Center City views at Society Hill Towers! Enter through a foyer with large coat closet into the open great room boasting ample space for everyday living and entertaining and a wall of floor-to-ceiling windows showcasing spectacular Center City views. Adjacent is the galley-style kitchen with ample cabinetry. There is a dressing area with excellent closet space that leads to the upgraded bathroom with modern white vanity and tub shower with white tilework. There are parquet wood floors throughout. Residents of Society Hill Towers enjoy a 24-hour doorman and all utilities plus basic cable. Access to the building's outdoor seasonal pool, fitness room, storage lockers, and parking in the building's underground garage are available for an additional fee. Also, there is an on-site Philly Car Share, a coin operated laundry room in the basement, and a shopping plaza on site with a market, dry cleaner, beauty salon, and one of Philly's most acclaimed restaurants, Zahav.

Built in 1963

Essential Information

| | |
|----------------|-------------|
| MLS® # | PAPH2553628 |
| Price | \$189,500 |
| Bathrooms | 1.00 |
| Full Baths | 1 |
| Square Footage | 522 |



| | |
|------------|---|
| Year Built | 1963 |
| Type | Residential |
| Sub-Type | Condominium,Unit/Flat/Apartment,Hi-Rise 9+ Floors |
| Style | Other |
| Status | Active |

Community Information

| | |
|--------------|---------------------|
| Address | 210 Locust St #16ew |
| Area | 19106 |
| Subdivision | WASHINGTON SQ |
| City | PHILADELPHIA |
| County | PHILADELPHIA-PA |
| State | PA |
| Municipality | PHILADELPHIA |
| Zip Code | 19106 |

Interior

| | |
|---------|-------------|
| Heating | Other |
| Cooling | Central A/C |
| Stories | 1 |

Exterior

| | |
|--------------|---------|
| Construction | Masonry |
|--------------|---------|

School Information

| | |
|----------|-------------------|
| District | PHILADELPHIA CITY |
|----------|-------------------|

Additional Information

| | |
|----------------|--------------------|
| Date Listed | October 29th, 2025 |
| Days on Market | 3 |
| Zoning | CMX3 |

Listing Details

| | |
|----------------|------------------------|
| Listing Office | Allan Domb Real Estate |
|----------------|------------------------|

© 2025 BRIGHT, All Rights Reserved. Information deemed reliable but not guaranteed. The data relating to real estate for sale on this website appears in part through the BRIGHT Internet Data Exchange program, a voluntary cooperative exchange of property listing data between licensed real estate brokerage firms in which Compass participates, and is provided by BRIGHT through a licensing agreement. Real estate listings held by brokerage firms other than Compass are marked with the IDX logo and detailed information about each listing includes the name of the listing broker. The information provided by this website is for the personal, non-commercial use of consumers and may not be used for any purpose other than to identify prospective properties consumers may be interested in purchasing. Some properties

which appear for sale on this website may no longer be available because they are under contract, have Closed or are no longer being offered for sale. Some real estate firms do not participate in IDX and their listings do not appear on this website. Some properties listed with participating firms do not appear on this website at the request of the seller.
Listing information last updated on November 2nd, 2025 at 9:52am EST