

# \$494,000 - 11010310 Beaumont Dr, OXFORD

MLS® #PACT2110508

**\$494,000**

3 Bedroom, 2.50 Bathroom, 1,505 sqft  
Residential on 0.20 Acres

SYCAMORE CROSSING, OXFORD, PA

**\*BRAND NEW PHASE!!\***

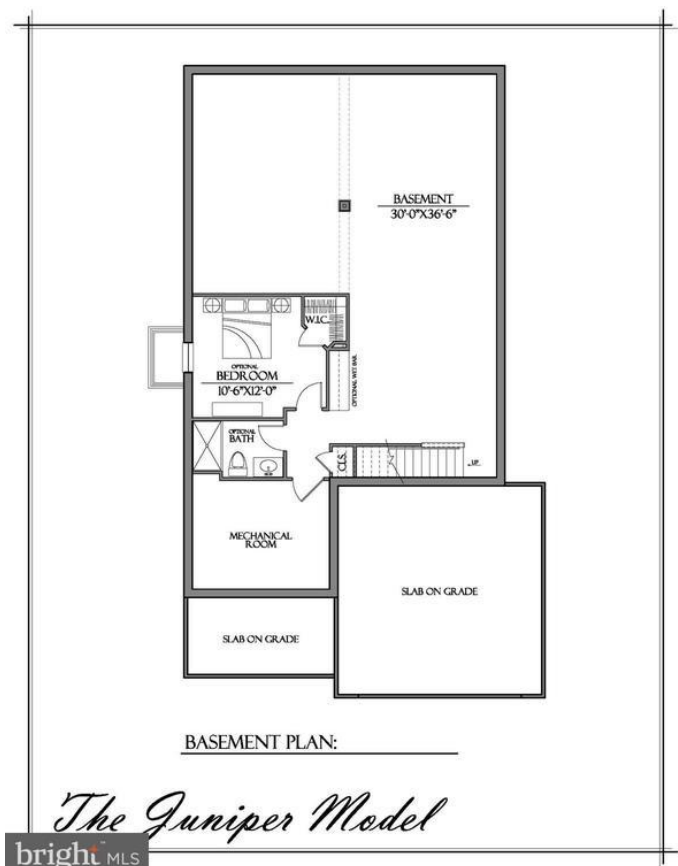
Welcome to Sycamore Crossing - Custom New Construction community in the heart of Oxford Borough. The new Model has been completed featuring a beautiful oak tread staircase and tiled Primary Bath Shower. This fantastic community is the best value in the area...SAI Custom Builder uses standard high-end finishes in these fully customizable Single Family Homes! The options for your home are limitless and our team is happy to help you custom design your new home to fit your lifestyle. you can choose 1, 2, or 2 story floor plans totaling up to as much as 3,600 square feet, and from 1-5 bedrooms with an optional First Floor Master Suite. High-End Finishes include Granite/Quartz Countertops and Stainless Steel Appliances, double-hung windows and high-end LVP flooring throughout the First Floor. These homes have Full Basements and 2-Car Garages as well. \*\*Take advantage of the special financing available through the builders lender. Offering 3% down, and no PMI, saving your buyer \$300+- per month in their payment!\*\* Rarely does such an amazing opportunity present itself! Floor plans, photos and elevations shown may not coincide with the actual model.

Built in 2024

## Essential Information

MLS® #

PACT2110508



SAI Custom Builders, LLC. All rights reserved. © 2024

Price	\$494,000
Bedrooms	3
Bathrooms	2.50
Full Baths	2
Half Baths	1
Square Footage	1,505
Acres	0.20
Year Built	2024
Type	Residential
Sub-Type	Detached
Style	Traditional
Status	Active

### Community Information

Address	11010310 Beaumont Dr
Area	Oxford Boro (10306)
Subdivision	SYCAMORE CROSSING
City	OXFORD
County	CHESTER-PA
State	PA
Municipality	OXFORD BORO
Zip Code	19363

### Amenities

Amenities	Carpet, Entry Lvl BR, Formal/Separate Dining Room, Pantry, Stall Shower, Tub Shower, Walk-in Closet(s), Wood Floors
# of Garages	2
Garages	Garage - Front Entry, Inside Access

### Interior

Interior Features	Floor Plan-Open
Appliances	Built-In Range, Dishwasher, Stainless Steel Appliances
Heating	Forced Air
Cooling	Central A/C
Has Basement	Yes
Basement	Full
Fireplace	Yes
# of Fireplaces	1
# of Stories	1

Stories 1 Story

## Exterior

Exterior Features Porch(es)

Roof Pitched, Shingle

Foundation Concrete Perimeter, Permanent

## School Information

District OXFORD AREA

## Additional Information

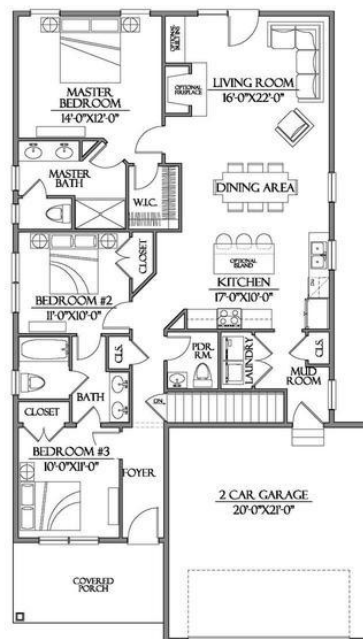
Date Listed September 29th, 2025

Days on Market 25

Zoning RES

## Listing Details

Listing Office EXP Realty, LLC



FIRST FLOOR PLAN:  
AREA=1,505 S.F.

*The Juniper Model*

bright MLS

© 2025 BRIGHT, All Rights Reserved. Information deemed reliable but not guaranteed. The data relating to real estate for sale on this website appears in part through the BRIGHT Internet Data Exchange program, a voluntary cooperative exchange of property listing data between licensed real estate brokerage firms in which Compass participates, and is provided by BRIGHT through a licensing agreement. Real estate listings held by brokerage firms other than Compass are marked with the IDX logo and detailed information about each listing includes the name of the listing broker. The information provided by this website is for the personal, non-commercial use of consumers and may not be used for any purpose other than to identify prospective properties consumers may be interested in purchasing. Some properties which appear for sale on this website may no longer be available because they are under contract, have Closed or are no longer being offered for sale. Some real estate firms do not participate in IDX and their listings do not appear on this website. Some properties listed with participating firms do not appear on this website at the request of the seller. Listing information last updated on October 23rd, 2025 at 6:15pm EDT