

\$465,000 - 11010 Welch St, CLINTON

MLS® #MDPG2157432

\$465,000

4 Bedroom, 3.00 Bathroom, 1,125 sqft
Residential on 0.24 Acres

ROLEE ESTATES, CLINTON, MD

PRICE IMPROVEMENT!! Welcome to this beautifully maintained split-level single-family home, perfectly situated on a private corner lot- with the added bonus of no HOA! This home qualifies for 100% FINANCING AND 2.5% ASSUMABLE INTEREST RATE.

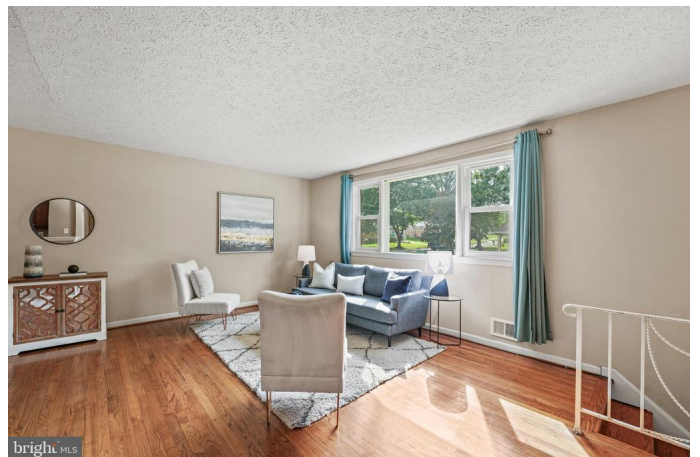
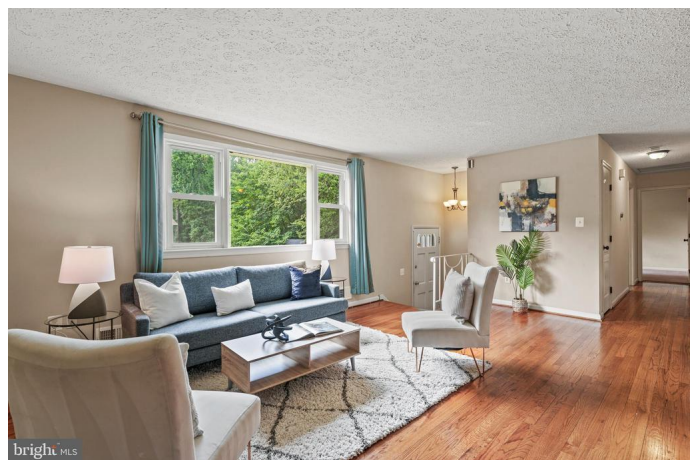
This 4-bedroom, 3-full-bath residence offers the perfect blend of comfort, functionality, and modern updates—including PAID OFF solar panels for energy efficiency and cost savings. Bill UNDER \$100 per month.

Step inside to find hardwood floors throughout and an open-concept kitchen featuring stainless steel appliances and ample counter space, ideal for everyday living and entertaining. The spacious layout flows seamlessly into the dining and living areas, creating a warm and inviting atmosphere.

Downstairs, the fully finished basement offers a fireplace, an open floor plan for entertaining, and a dedicated bar area—perfect for hosting guests or enjoying cozy nights in. You'll also love the large laundry room equipped with a high-efficiency washer and dryer for added convenience.

Additional highlights include a 2-car garage and the privacy of a corner lot, all without the restrictions or fees of an HOA.

This home truly checks every box—schedule



your tour today!

Built in 1968

Essential Information

MLS® #	MDPG2157432
Price	\$465,000
Bedrooms	4
Bathrooms	3.00
Full Baths	3
Square Footage	1,125
Acres	0.24
Year Built	1968
Type	Residential
Sub-Type	Detached
Style	Split Foyer
Status	Active

Community Information

Address	11010 Welch St
Subdivision	ROLEE ESTATES
City	CLINTON
County	PRINCE GEORGES-MD
State	MD
Zip Code	20735

Amenities

Amenities	Attic, Master Bath(s), Upgraded Countertops, Wood Floors
Parking	Concrete Driveway
# of Garages	2
Garages	Garage - Front Entry

Interior

Appliances	Dishwasher, Disposal, Exhaust Fan, Microwave, Oven/Range-Electric, Refrigerator
Heating	Forced Air, Heat Pump(s)
Cooling	Central A/C
Has Basement	Yes
Basement	Other

Fireplace	Yes
# of Fireplaces	1
# of Stories	2
Stories	2 Story

Exterior

Exterior	Brick and Siding
Roof	Architectural Shingle
Foundation	Brick/Mortar

School Information

District	PRINCE GEORGE'S COUNTY PUBLIC SCHOOLS
----------	---------------------------------------

Additional Information

Date Listed	June 30th, 2025
Days on Market	101
Zoning	RR

Listing Details

Listing Office	RLAH @properties
----------------	------------------

© 2025 BRIGHT, All Rights Reserved. Information deemed reliable but not guaranteed. The data relating to real estate for sale on this website appears in part through the BRIGHT Internet Data Exchange program, a voluntary cooperative exchange of property listing data between licensed real estate brokerage firms in which Compass participates, and is provided by BRIGHT through a licensing agreement. Real estate listings held by brokerage firms other than Compass. are marked with the IDX logo and detailed information about each listing includes the name of the listing broker. The information provided by this website is for the personal, non-commercial use of consumers and may not be used for any purpose other than to identify prospective properties consumers may be interested in purchasing. Some properties which appear for sale on this website may no longer be available because they are under contract, have Closed or are no longer being offered for sale. Some real estate firms do not participate in IDX and their listings do not appear on this website. Some properties listed with participating firms do not appear on this website at the request of the seller. Listing information last updated on October 22nd, 2025 at 10:45pm EDT