

\$550,000 - 1011 Hopewell Ave, TAKOMA PARK

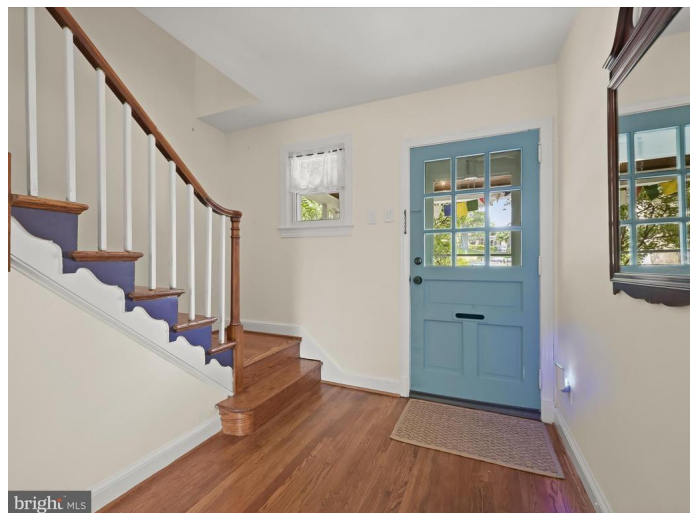
MLS® #MDMC2191004

\$550,000

3 Bedroom, 1.50 Bathroom, 1,700 sqft
Residential on 0.14 Acres

TAKOMA PARK, TAKOMA PARK, MD

Brimming with charm and modern updates, this classic brick colonial blends timeless appeal with today's comforts in an ideal Takoma Park location. A lush front herb and rose garden leads to a covered front porch, setting a warm and welcoming tone before you even step inside. Hardwood floors flow throughout the main level, beginning in the spacious living room where a bay window frames views of the front yard. The fireplace adds character and is currently nonfunctional, but can easily be made functional once again. In the adjacent dining room, chair rail molding and a sliding glass door connect seamlessly to the oversized back deck perfect for entertaining or everyday enjoyment. The renovated kitchen balances style and efficiency, featuring white cabinetry, quartz countertops, and stainless steel appliances. Additional cabinetry on the opposite wall, topped with a butcher block counter, provides bonus prep space and storage. A recently updated powder room on the main level adds to the home's everyday functionality. Upstairs, three bright bedrooms share a renovated full bath that blends classic and contemporary elements. The black and white color palette is timeless, while a modern vessel sink and a floor-to-ceiling tiled shower elevate the space with a fresh, current feel. The lower level offers flexible space to meet your needs. One half is partially finished and ideal for a recreation room, home gym, or creative space. The other half houses laundry,



utilities, and generous storage. Step outside to find a private and expansive backyard bordered by mature trees, offering plenty of space to relax, play, or garden. The oversized deck has been updated with new beams, and additional recent improvements include chimney coping and masonry updates, new exterior steps on the side of the house, and a rewired circuit breaker panel prepped for future expansion. Ample street parking adds everyday convenience for you and your guests. Just moments from Sligo Creek Park and its miles of trails and green space, this home is ideally located near downtown Takoma Park, the Metro, three major bus lines, and the soon-to-open Purple Line. With Washington, D.C. only minutes away, you'll enjoy the perfect mix of character, convenience, and connection. Please note: photos of some rooms have utilized virtual staging.

Built in 1941

Essential Information

| | |
|----------------|-------------|
| MLS® # | MDMC2191004 |
| Price | \$550,000 |
| Bedrooms | 3 |
| Bathrooms | 1.50 |
| Full Baths | 1 |
| Half Baths | 1 |
| Square Footage | 1,700 |
| Acres | 0.14 |
| Year Built | 1941 |
| Type | Residential |
| Sub-Type | Detached |
| Style | Colonial |
| Status | Active |

Community Information

Address 1011 Hopewell Ave

| | |
|--------------|---------------------|
| Subdivision | TAKOMA PARK |
| City | TAKOMA PARK |
| County | MONTGOMERY-MD |
| State | MD |
| Municipality | City of Takoma Park |
| Zip Code | 20912 |

Amenities

| | |
|-----------|--|
| Amenities | Wood Floors, Stall Shower, Formal/Separate Dining Room, Upgraded Countertops |
| View | Garden/Lawn |

Interior

| | |
|-------------------|--|
| Interior Features | Floor Plan-Traditional |
| Appliances | Refrigerator, Water Heater, Dishwasher, Oven-Single, Oven/Range-Electric, Range hood, Stainless Steel Appliances |
| Heating | Forced Air |
| Cooling | Central A/C |
| Has Basement | Yes |
| Basement | Rear Entrance, Connecting Stairway, Partially Finished, Shelving, Walkout Level, Interior Access |
| Fireplace | Yes |
| # of Fireplaces | 1 |
| Fireplaces | Mantel(s), Wood, Non-Functioning |
| # of Stories | 3 |
| Stories | 3 |

Exterior

| | |
|-------------------|------------------------------------|
| Exterior | Brick and Siding |
| Exterior Features | Sidewalks, Deck(s), Fenced-Rear |
| Lot Description | Front Yard, Landscaping, Rear Yard |
| Windows | Double Pane, Screens, Vinyl Clad |
| Roof | Asphalt |
| Foundation | Other |

School Information

| | |
|----------|----------------------------------|
| District | MONTGOMERY COUNTY PUBLIC SCHOOLS |
| Middle | TAKOMA PARK |

Additional Information

Date Listed August 14th, 2025

Days on Market 70

Zoning R60

Listing Details

Listing Office Northrop Realty

© 2025 BRIGHT, All Rights Reserved. Information deemed reliable but not guaranteed. The data relating to real estate for sale on this website appears in part through the BRIGHT Internet Data Exchange program, a voluntary cooperative exchange of property listing data between licensed real estate brokerage firms in which Compass participates, and is provided by BRIGHT through a licensing agreement. Real estate listings held by brokerage firms other than Compass. are marked with the IDX logo and detailed information about each listing includes the name of the listing broker. The information provided by this website is for the personal, non-commercial use of consumers and may not be used for any purpose other than to identify prospective properties consumers may be interested in purchasing. Some properties which appear for sale on this website may no longer be available because they are under contract, have Closed or are no longer being offered for sale. Some real estate firms do not participate in IDX and their listings do not appear on this website. Some properties listed with participating firms do not appear on this website at the request of the seller.

Listing information last updated on October 22nd, 2025 at 10:45pm EDT